

East Niles Community Services District

-What We Do-

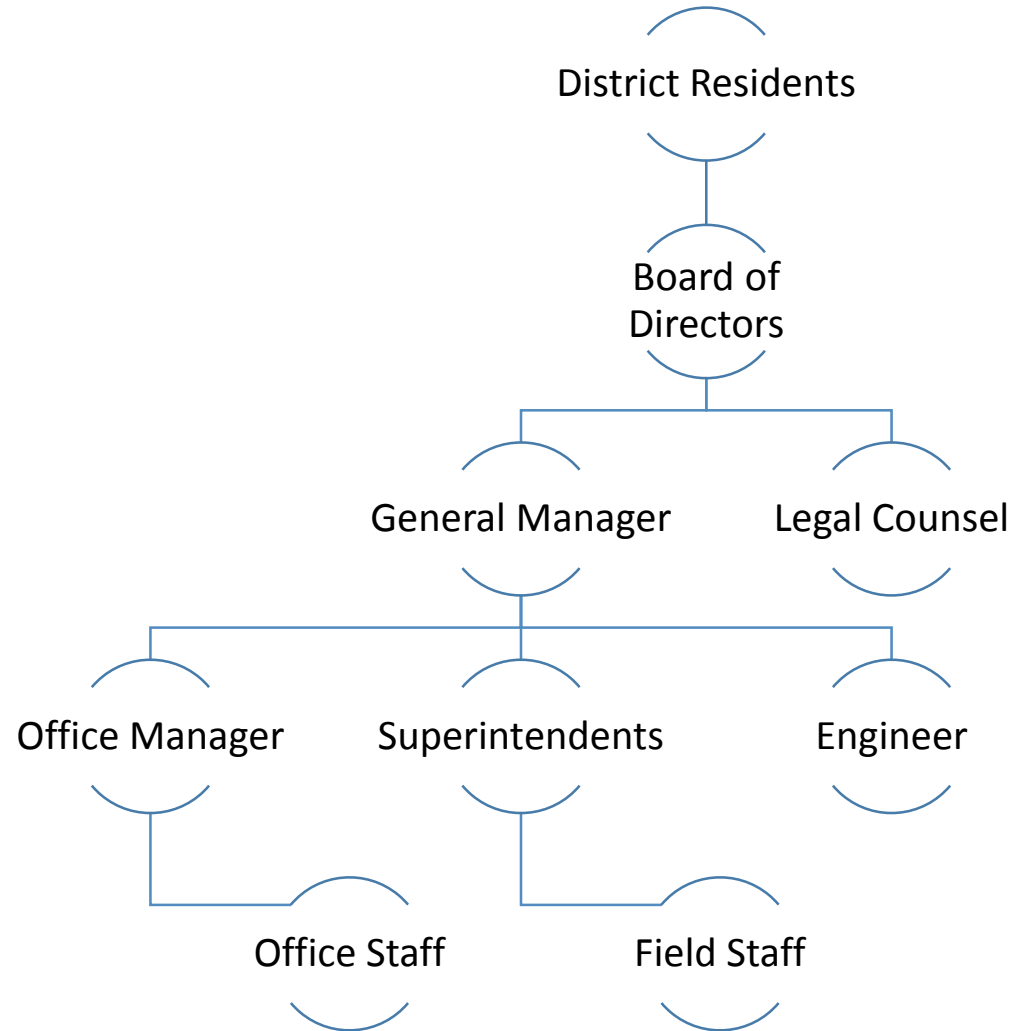
January 2017



East Niles Community Services District

- Formed in 1954 by election, from the rights and properties of the East Bakersfield Water Company and the Pacific Water Company
- Began distributing water in April 1956
- Now provides water supply and wastewater collection services
- Originally served 10,500 people via 3,100 connections over an area of 2,440 acres
- Grown to over 35,000 people served through over 7,800 connections covering 6,200 acres (through 42 annexations)

Organization





Office
7,800+ bills/month



Regulations
Monthly and Annual
Reporting

Distribution
7,800+- connections
Over 130 miles of pipe
2,700 valves and hydrants



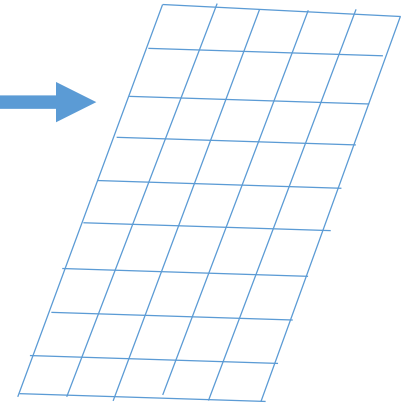
Surface Water
Improv. Dist. 4 Water
Treatment Plant



14 Reservoirs



7 Pump Stations
(5 Pressure Zones)



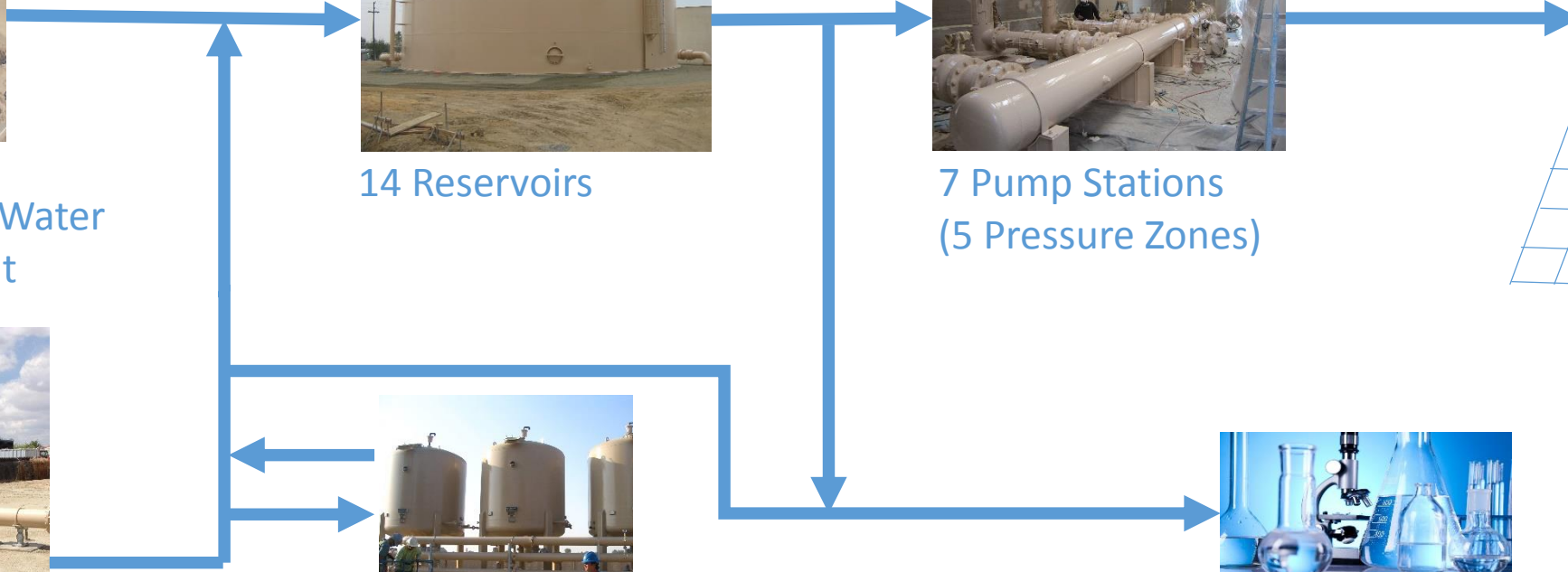
Groundwater
6 Active Wells
(10 total)



2 Treatment Plants

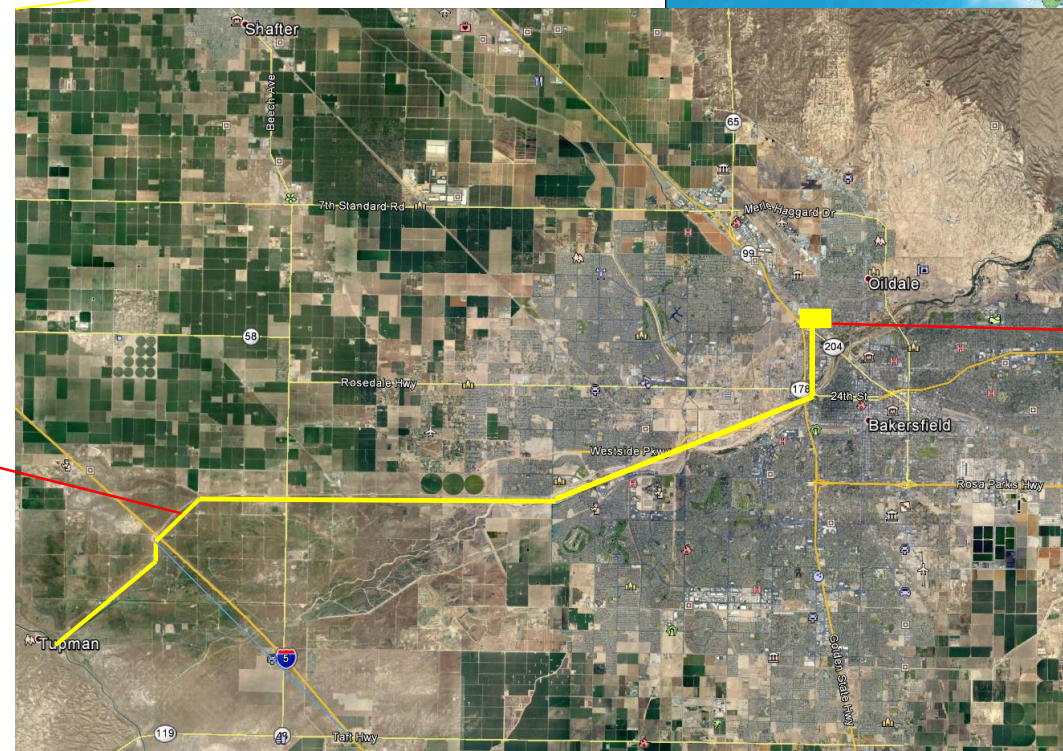


Water Quality Monitoring



Water Supply

- Surface Water Supplies
 - Kern County Water Agency
- Groundwater Supplies
 - Tulare Lake Subbasin



Cross Valley Canal
(from Aqueduct to WTP)

Henry C. Garnett
Treatment Plant

How is money spent in the District?

Piping Repairs & Replacement (130+ miles of Pipes)

- Pipes, Fittings and Valves
- Repair Couplings
- Sand Backfill
- Road Base
- Road cutting / repaving
- Testing
- Coordination with City/County



How is money spent in the District?

Pumps & Motors

(7 Pump Stations – 30 pumps)

- Monitoring of condition
- Disinfection chemicals
- Cleaning
- Lubrication
- Power
- Repair
- Rewinding of motors
- Replacement of equipment



How is money spent in the District?

Tanks

(8 Sites – 14 tanks)

- Monitoring
- Disinfection chemicals
- Repainting (interior and exterior)
- Site maintenance
- Security
- Replacement of equipment



How is money spent in the District?

Arsenic Treatment (2 Treatment Plants)

- Monitoring of condition
- Media replacement (purchase and disposal)
- Laboratory analyses
- Site maintenance
- Security
- Replacement of equipment



How is money spent in the District?

Water Distribution

- Monitoring
- Meter reading
- Equipment replacement
- Customer Services Responses
- Sampling



How is money spent in the District?

Compliance with Regulations

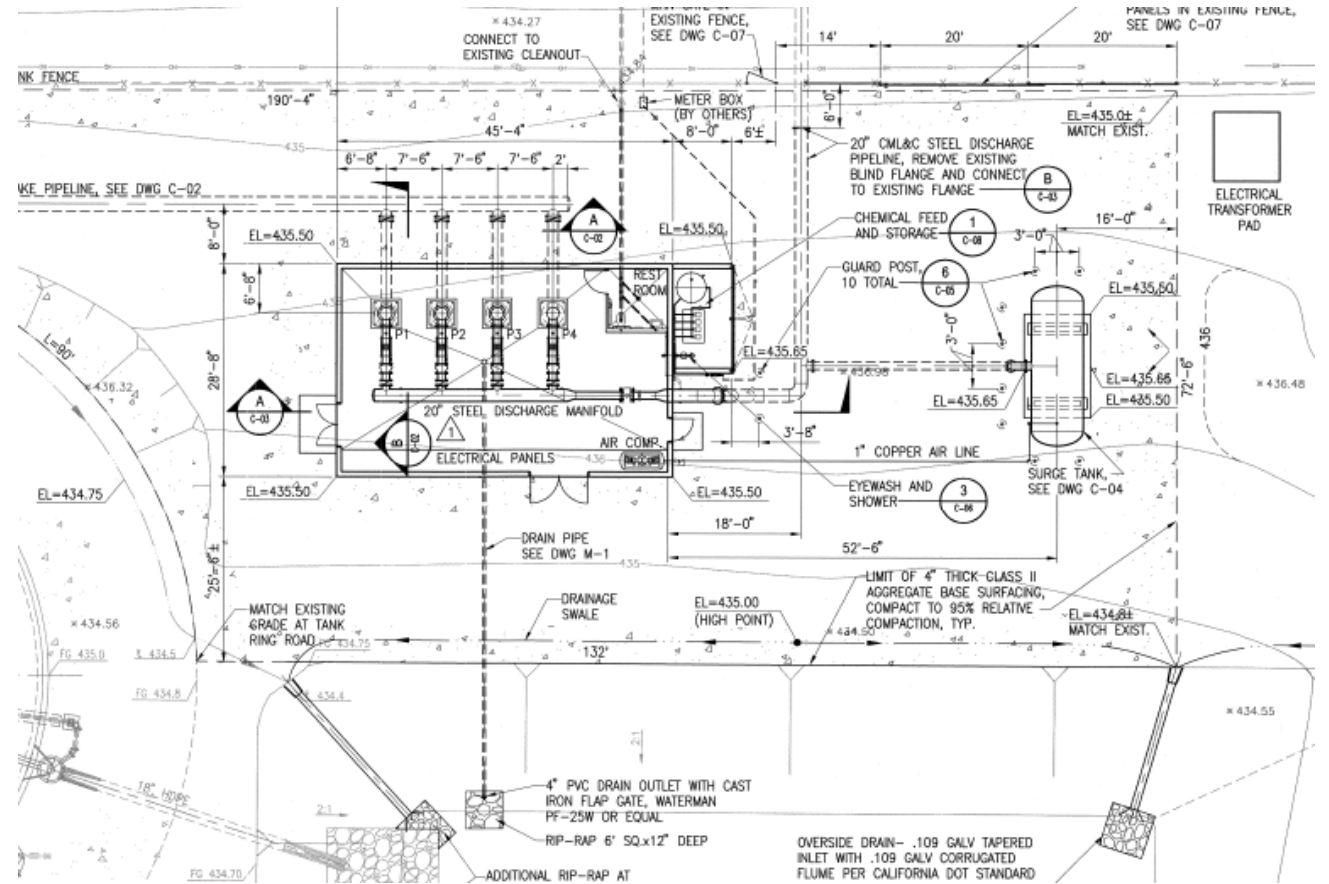
- Laboratory analyses
 - Primary Inorganics (14 items)
 - Nitrate
 - Secondary Standards (15 items)
 - General Minerals (8 items)
 - Volatile Organics (28 items)
 - Synthetic Organics (5 items)
 - Radioactivity (4 items)
- Reporting
- Consumer Confidence Reporting



How is money spent in the District?

Planning and Design

- Capital replacement projects
 - Water mains
 - Water valves
 - Booster pumps
 - Tanks
 - Wells
 - SCADA*
 - Water system analysis
 - Water supply analysis



*Supervisory Control and Data Acquisition

How is money spent in the District?

Field Equipment & Vehicles

- Pickup trucks
- Backhoe
- Service trucks
- Dump truck
- Vacuum truck
- Air Compressor and Jack Hammer
- Tools
- Maintenance and Repair of above items
- Replacement of equipment



How is money spent in the District?

Office Equipment & Supplies

- Computer hardware & software
- Copiers and printers
- Billing and meter reading equipment
- GIS* server
- Office supplies
- Equipment replacement

*Geographic Information System



How is money spent in the District?

Staff & Training

- Board of Directors
- Management
- Field Staff
- Office Staff

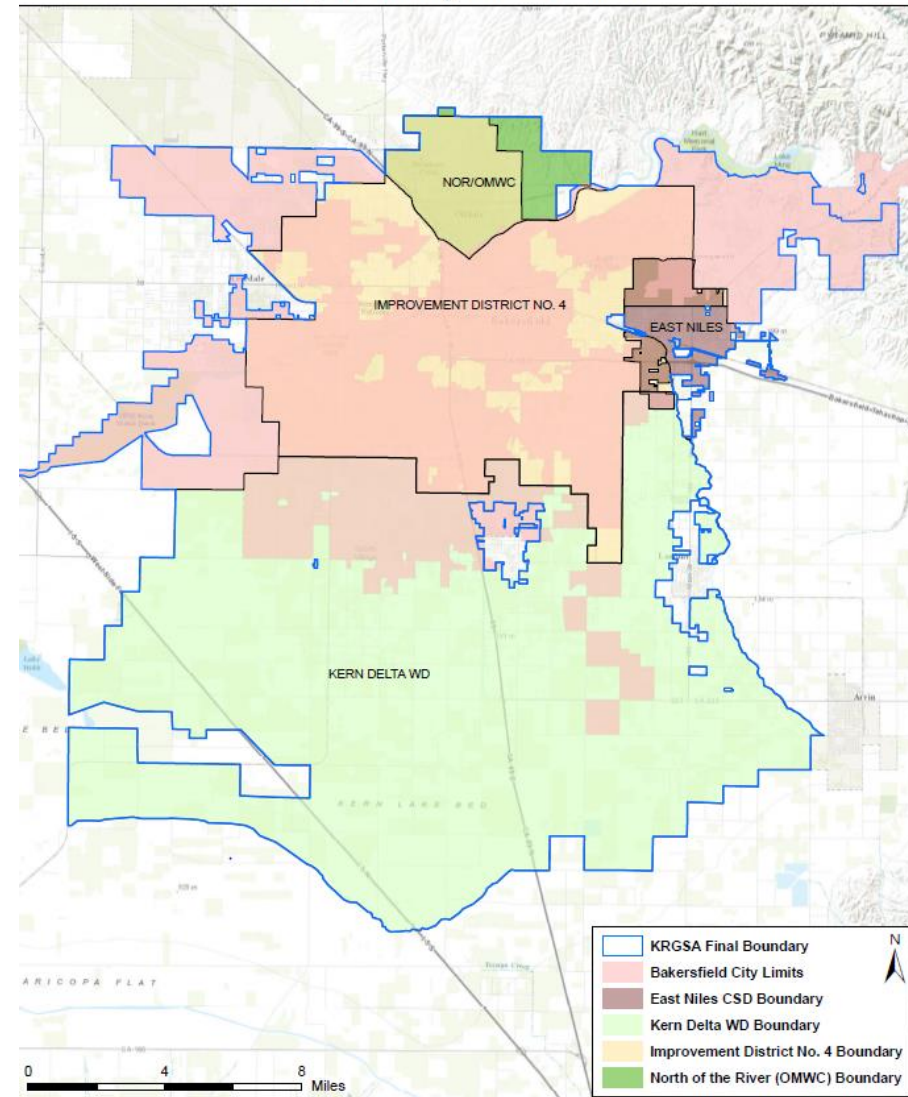


How is money spent in the District?

Outside Agency Coordination

- State Water Board
- Kern County Environmental Health
- Kern County Public Works
- City of Bakersfield Public Works
- Cal Trans
- Kern County Water Agency
- Overlying Water Districts

Kern River Groundwater Sustainability Agency (GSA)
Adopted Boundary with Service Areas



How is money spent in the District?

Current and Future State Mandates

- Groundwater Sustainability Agency
- Water contaminant level changes
- Power and water conservation
- Environmental rules & regulations



How is money spent in the District?

